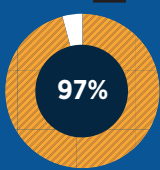


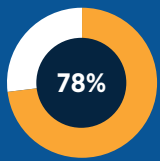


# FIRST DESTINATION SURVEY RESULTS

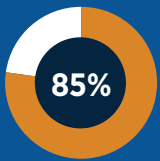
## EMPLOYMENT & GRADUATE SCHOOL STATUS



97% of graduates employed or attending graduate school

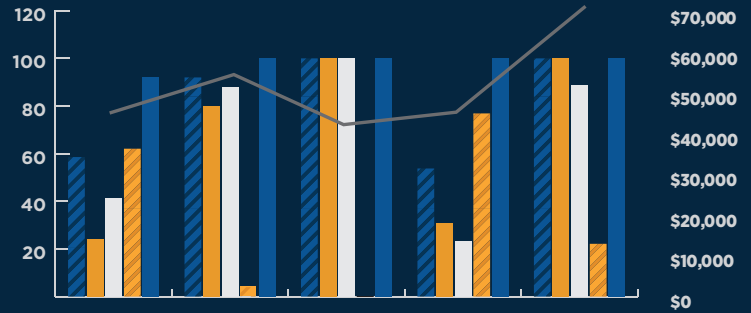


78% of graduates employed



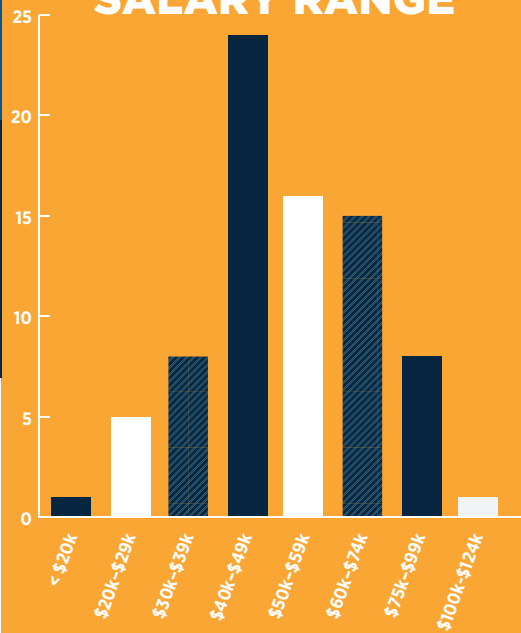
85% of those employed are employed in their major field of study

## DATA BY COLLEGE OF STUDY



	Arts & Sciences	Batterman School of Business	Education	Health Services	Nursing
Total Employed	52%	96%	100%	91%	100%
Employed in Major Field	40%	85%	100%	45%	100%
Full-Time Employed	52%	96%	100%	55%	93%
Attending Grad School	68%	41%	50%	64%	21%
Employed or Grad School	92%	100%	100%	100%	100%
Average Salary	\$47,055	\$57,700	\$43,000	\$47,900	\$71,000

## FULL-TIME EMPLOYED SALARY RANGE



95%

FELT THAT CUW PREPARED THEM FOR THE NEXT STEP

MEDIAN SALARY  
**\$53,000**

65%

Completed an internship, clinical, practicum, or field placement while at Concordia

## TYPE OF EMPLOYMENT



37%

For-profit company



36%

Not-for-profit/ NGO company or organization



10%

Government agency or public sector

10.1%

Temporary/ contract work

## EMPLOYMENT DETAILS





# Graduate Schools Attended

- Alverno
- Bethany Lutheran College
- Bryant and Stratton College
- Columbia Southern University
- Concordia Theological Seminary
- Concordia University Wisconsin
- Garrett Evangelical Theological Seminary
- Grand Canyon University
- Kaplan
- Madonna University
- University of Minnesota
- University of MN Veterinary School
- UW-Milwaukee
- UW-Madison
- UW-Stevens Point

## JUST SOME OF THE PLACES OUR **FALCONS WORK**

- Advocate Aurora Health
- Arizona's Children Association
- Ascension Columbia St Mary's Milwaukee
- Associated Bank
- Atonement Lutheran School
- Barnes Jewish Hospital
- Bellin Health
- Brady Corporation
- Capture Sports and Entertainment
- Cedarburg School District
- CESA 5
- Charter Manufacturing
- Children's Hospital of WI
- Cintas
- Concordia Lutheran School
- Discovery World
- Family Promise of Ozaukee County
- First Immanuel Lutheran School
- Franklin Public Schools
- Froedtert and the Medical Center of WI
- Froedtert Hospital
- Gehl Foods
- Gunderson Health Systems
- Immanuel Lutheran
- Infinite Gymnastics
- Institute for Economics and Peace
- Interior Logic Group
- Kerry Foods
- Kleen Test Products Corporation
- KPMG
- La Macchia Group
- Lakeside International Trucks
- Living Word Lutheran High School
- Lutheran High School Association
- Lutheran High School Association of Greater Milwaukee
- Lutheran West High School
- Manitowoc Two Rivers YMCA
- MARCO Promos
- Milliman
- Milwaukee Powersports
- Northwestern Mutual
- Oliver Wyman
- Ozaukee Childcare and Preschool
- Parkview hospital
- PMA Financial
- ProHealth Care Oconomowoc Memorial Hospital
- Redeemer Lutheran School
- Rise Savior Lutheran School
- Rising Star
- Rockingham Community College
- Saint John Lutheran School
- Sentry
- Smith Station Elementary School
- St. Michael's Lutheran School
- St. Paul Lutheran Church
- St. Paul's Lutheran Early Childhood Center
- St. Peter's Lutheran Church and School
- Straight Arrow Financial Group
- The Lynde & Harry Bradley Foundation
- Total Quality Logistics
- U.S. Bank
- Uline
- Valley Lutheran School
- Wauwatosa School District

Response Rate: 24%, 103 responses of 428 surveyed